

## You Can Make a Difference

Episcopal Community Services helps individuals and families with multiple needs overcome the impact of poverty. ECS relies on the generosity of individual, parish, foundation and corporate donors for a substantial portion of its annual operating budget of over \$18 million. As government funding continues to decline, Annual Fund giving has become even more crucial in helping bridge the gap.

Each gift to the Annual Fund is directed to where it is needed the most, immediately helping those struggling under the burden of poverty in San Diego and the Coachella Valley.

Donations enable us to provide basic necessities such as shelter, food and personal care items. In addition, ECS offers counseling services, job referrals, and self-sufficiency coaching to ensure each client we serve is provided with the care and services they need to live a life of dignity.

To make a meaningful donation today, please call the Development Office at (619) 228-2800 or e-mail [development@ecscalifornia.org](mailto:development@ecscalifornia.org).

**Coachella Valley Program Office**  
477 South Palm Canyon Drive, #6  
Palm Springs, CA 92262  
(760) 318-7740

Corporate Office Mailing Address:  
PO Box 33168  
San Diego, CA 92163  
(619) 228-2800  
[www.ecscalifornia.org](http://www.ecscalifornia.org)

**For over eighty years,**

**Episcopal Community Services**

**has provided comprehensive help  
to thousands of children and adults,**

**inspiring them to lead**

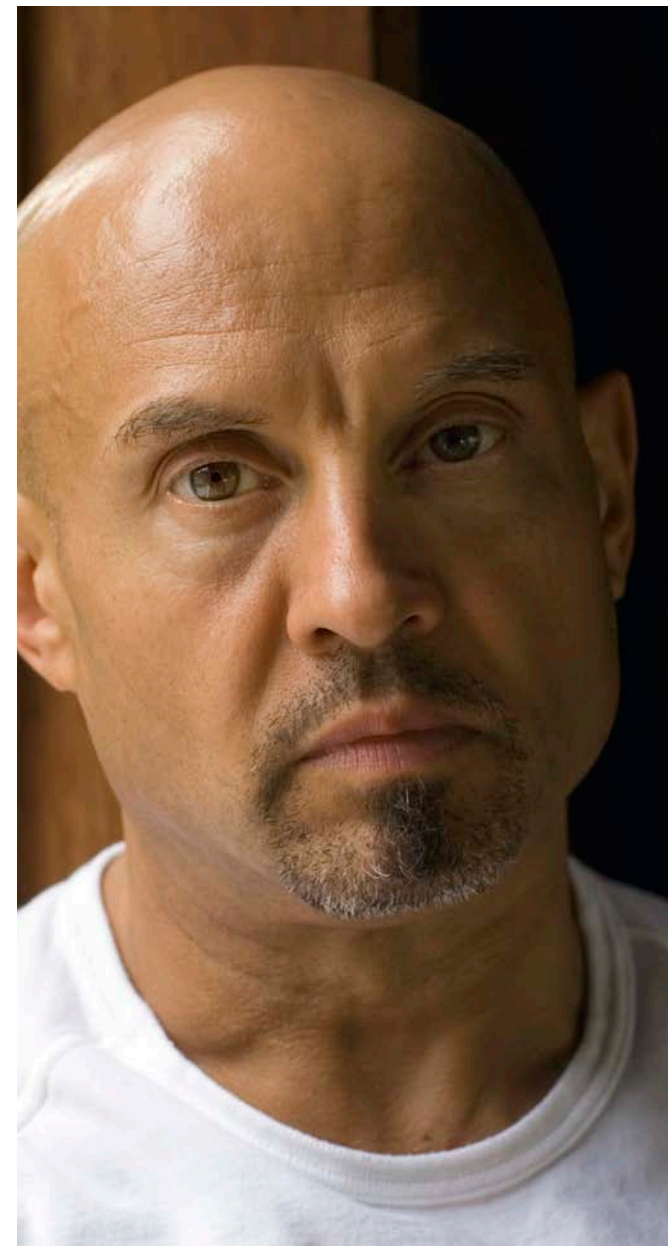
**independent and successful lives.**

**Each of our vital programs and services**

**offered each day**

**are guided by the ECS mission**

**of “serving God by serving those in need.”**



## COACHELLA VALLEY PROGRAMS





Homeless advocates estimate approximately 10,000 individuals are homeless in Riverside County. Many of those who are homeless find themselves in the Coachella Valley region of the county, where resources are limited. More than one-third of the homeless population likely suffer from mental illness, and almost half of the adults have been homeless for one year or longer.

ECS has responded to the growing need for homeless services by providing essential residential and outreach programs.

## HOUSING

**Desert Vista** is a permanent, supportive housing for chronically homeless and disabled. Several homesites throughout Palm Springs, Cathedral City and Desert Hot Springs provide 40 residents with long-term housing. Residents work towards achieving their independent living goals by utilizing a low demand, harm reduction model that enables them to progress at their own pace.

Case management staff work closely with residents in the development of their independent living plans to assist them in maintaining permanent housing. Rent is equal to 30% of a resident's income.



## SUPPORTIVE SERVICES

**The Mission Outreach Program:** In collaboration with the First Baptist Church, serves homeless individuals in Desert Hot Springs on a walk-in basis with mail and telephone service, hygiene products, sack lunches and referrals to community social services.

**Family Resource Center:** Assists homeless families and individuals with emergency needs such as food, bus vouchers and rental assistance in Desert Hot Springs. Desert Vista is partially funded by the U.S. Department of Housing and Urban Development (HUD) through Riverside County, Department of Social Services.

For more information, please contact the ECS Coachella Valley Program Office at (760) 318-7740.

**Coachella Valley Program Office**  
**477 South Palm Canyon Drive, #6**  
**Palm Springs, CA 92262**  
**(760) 318-7740**